



ROTHES GLEN

— SPEYSIDE —

The Luxury Castle for Whisky Connoisseurs





Welcome to Rothes Glen

Rothes Glen is in a picture-perfect position in the heart of Speyside, offering breath-taking views down the glen. Built by the Dunbar-Dunbar family in 1893 and designed by famous whisky architect Charles Chree Doig, Rothes Glen is an iconic baronial style Highland castle.

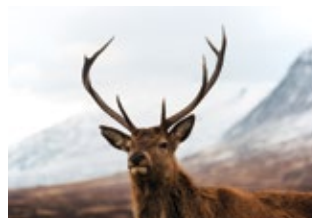
Rothes Glen has 14 king-size en suite bedrooms and one accessible bedroom suite, a stunning drawing room and dining room, breakfast room, library, snooker room, tasting room, whisky vault and tower room. Set within 11 acres of grounds and an idyllic lochan, there are outdoor terraces, heated kennels and sporting rooms to ensure you can enjoy the best of Speyside's magnificent scenery.

Situated equidistant between Inverness and Aberdeen airports and rail stations, the castle has a helipad in the meadow, ensuring we are easily accessible however you choose to travel.

At Rothes Glen you are treated to the utmost care and attention by our dedicated team, committed to ensuring your every desire is met with impeccable service. Indulge in a dining experience like no other, led by our award-winning chef who crafts culinary masterpieces using local, seasonal ingredients.

During your stay immerse yourself in the rich heritage of Speyside as you explore the finest distilleries where the art of whisky-making is perfected. For those seeking adventure, indulge in exhilarating outdoor activities such as fishing, shooting, stalking or a scenic walk and even foraging amidst the breathtaking landscapes that surround the castle. Whether its opulence or comfort, luxury feasting or outdoor adventure, Rothes Glen is the ideal place to enjoy the very best Scottish hospitality in the heart of whisky country.

Damian Riley-Smith





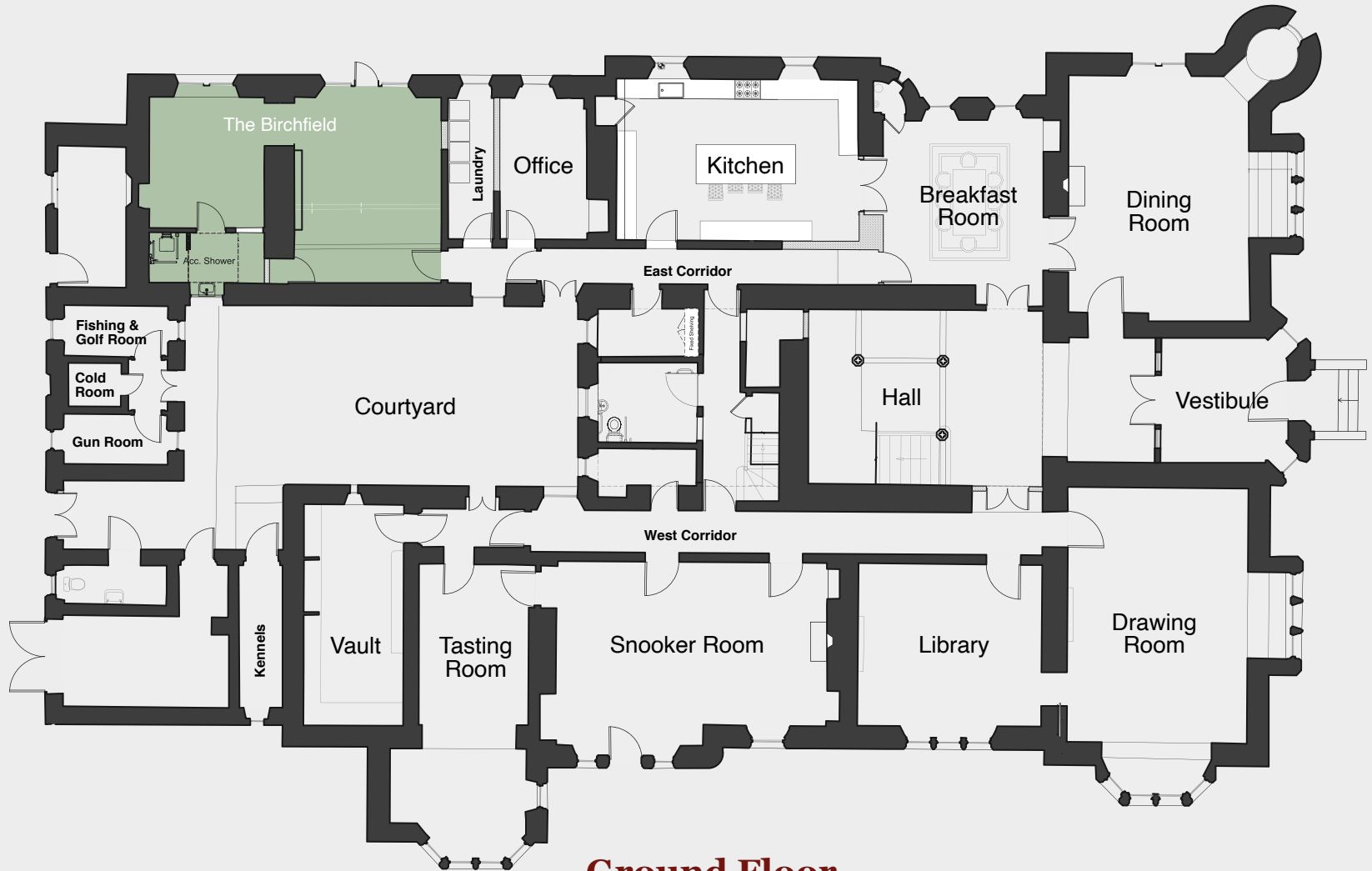
The Castle

Extensively refurbished to the highest specifications during 2020 and 2021, Rothes Glen is a luxury exclusive use castle sleeping up to 28 guests. The castle is fully-staffed and can cater to your every need from traditional Highland banquets to picnics by the lochan and bespoke activities in the local area and we pride ourselves on never saying no.





ROTHES GLEN
— SPEYSIDE —



Ground Floor

The Ground Floor

As you walk in the main entrance you cannot help but be stunned by the opulent hall with its Italian mosaic floor, crystal chandelier and sweeping staircase, all lit by the stain-glass laylight. The hall leads you to all our reception rooms packed with antiques, oil paintings and character.

We haven't forgotten what the modern world has to offer and have excellent Wi-Fi beamed across the glen, with newly refitted electricity and plumbing throughout. There are formal drawing and dining rooms, a library, large snooker room, tasting room and whisky vault as well as a magnificent newly refurbished kitchen and breakfast room. All the reception rooms have large original windows with fabulous views, open fireplaces and panelled ceilings and are furnished to the very highest standard.

Whether you're feasting in the dining room, playing snooker with friends or enjoying a dram whilst soaking up the beautiful views, Rothies Glen is the perfect place to unwind and relax as well as conduct business. Our kitchen is run by our wonderful chef Alan Robertson and dining can be in the sublime grand dining room, informal breakfast room, or when weather permits, on our outdoor terraces (that doesn't exclude bespoke picnics, sumptuous cream teas or light lunches which can be served wherever you choose). In the centre of the castle is a large courtyard which includes extensive seating and heaters, a game larder, stores for shooting, fishing and outdoor games, and a heated dog kennels.

“All the reception rooms at Rothies Glen have large original windows with fabulous views...”





ROTHES GLEN

— SPEYSIDE —

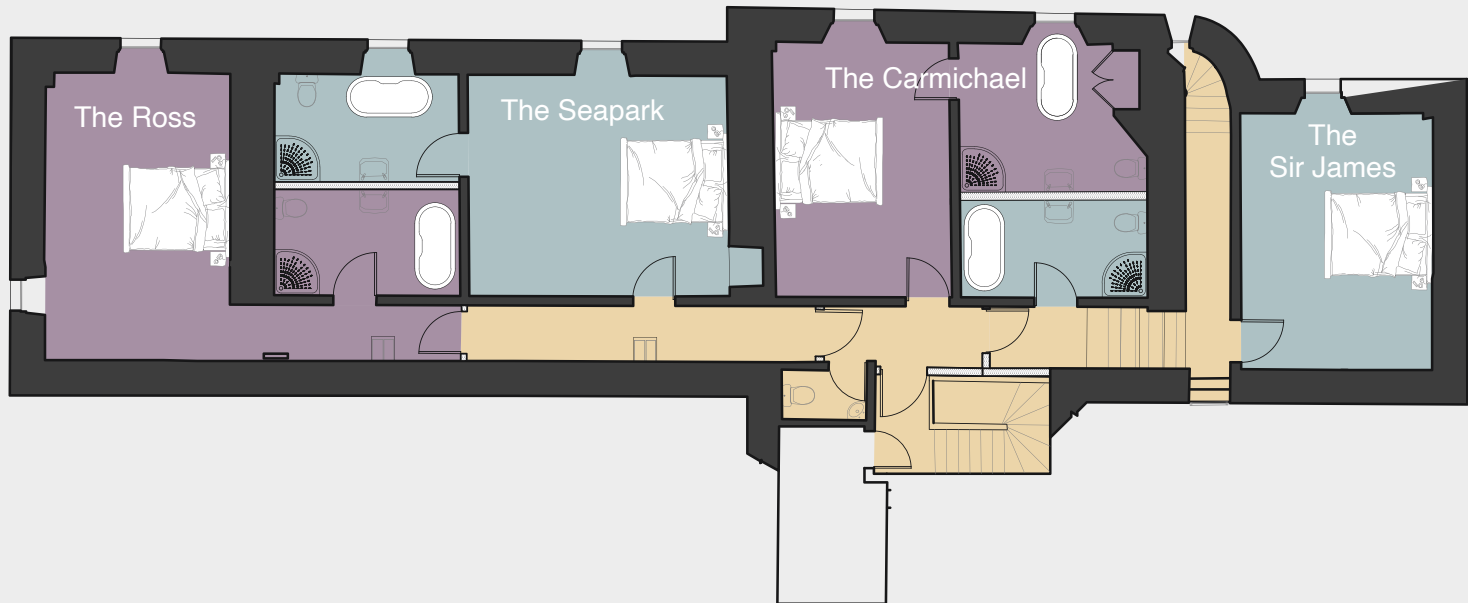


First Floor

The Bedrooms: First and Second Floor

Our 14 en suite king-size bedrooms have been fully refurbished and all are marvellously generous in size. Each bedroom is unique and has been lovingly furnished and decorated to reflect the character of the castle. Every bedroom has a king-size bed, crisp cotton sheets and goose-down bedding and an abundance of fluffy white towels and luxury bath and body products. The beds are of the highest quality so whether you are in a four-poster or velvet sleigh bed a good night's rest is inevitable.





Second and Third Floors

“Each bedroom is unique and has been lovingly furnished and decorated...”

All our furniture and furnishings have been sourced from local antique shops, auction houses and the very best local companies such as Johnstons of Elgin. Each bedroom has a large bathroom with underfloor heating, heated towel rail, huge shower and large bath with delicious white fluffy robes and views to die for. There are 10 grand bedrooms on the first floor, and a further four on the second floor, with an accessible bedroom suite on the ground floor if required.



Third Floor

Climb the winding staircase to the very top of the Rothes Glen tower and you reach our whisky observatory. Wood panelled to mimic the inside of a whisky washback you can sit and enjoy the stunning views with a dram and telescope or read next to the fire in one of our tweed armchairs.





The Grounds

The gardens and grounds of Rothes Glen are extensive and private and have been lovingly restored and improved since we bought the castle in 2019. Approached by a long cherry tree lined driveway, we are surrounded by formal gardens, a stunning meadow with magnificent specimen trees and a private lochan. The formal gardens include a terrace rose garden, newly planted circular garden mosaic topiary garden and extensive lawns for croquet, games or relaxing on one of our sun loungers.



There is a large terrace and fountain furnished with garden table and chairs and large firepits, ideal for outdoor dining or barbecues, or just enjoying the Speyside sunshine. The formal gardens are surrounded by a beech hedge, and you can stroll down the steps in to the gorgeous meadow towards the lochan, complete with rowing boat, fed by the Burn of Stonehouse. If you're lucky you may spot our local osprey, red squirrels, pine martens or resident deer dashing in and out of the trees. Whether its snowdrops and daffodils in the spring, or rhododendrons and lilies in the summer, the gardens and grounds are idyllic all year round, reflecting the grandeur of Rothes Glen and the beauty of the surrounding scenery.



“...stroll down the steps in to the gorgeous meadow towards the lochan”

The Rothes Glen Team

Rothes Glen is fully staffed by our friendly local team who will look after your every need during your stay. The Manager will arrange every detail, from transport and dining to fully bespoke trips and excursions. Our in-house chef will prepare delicious breakfasts, lunches, teas and dinners using the very best locally sourced fresh produce. We have extensive menus for you to choose from, however he is always happy to accommodate requests.

Our fabulous housekeepers not only ensure the castle is immaculate and serviced daily, they all have a wealth of experience and can look after any needs you may have. Our groundsman and outdoor staff are always on hand should you require outdoor expertise, and ghillies and guides are ready and waiting from local estates should they be required.

Damian Riley-Smith, who owns Rothes Glen, is also the founder and owner of Whisky Magazine and has used his wealth of experience and extensive whisky contacts to ensure all the whisky cabinets are stocked with one of the best selections of whisky and other spirits in Speyside. And if there's a tippie we haven't already got, don't worry, we'll find it for you!

All our staff live locally so have extensive knowledge of the area and understand the very best of what Speyside has to offer and are happy to share their experience and expertise to enrich your visit.

“All our staff live locally so have extensive knowledge of the area...”





The Rothes Glen Whisky Experience

Our unique whisky experience includes:

- Welcome by the Rothes Glen team with refreshments and dram on arrival
- Unique tours with whisky and food-pairing tastings hosted by the team and Whisky Magazine experts
- Scotch whisky cabinets containing the house collection, available for purchase by the dram or decanter
- Whisky Magazine Hall of Fame tasting room
- Whisky Magazine Editor's Blend whisky available to all overnight visitors in their room
- In-house dinners hosted by distillery managers with whisky masterclasses
- Walk-in vault and 24-hour security system for complete peace of mind
- Access to closed distilleries and whisky personalities; blenders, ambassadors and distillery managers
- Option to book tailored whisky experiences, tastings and dinners with leading experts
- Distillery tours
- Well-stocked humidor with cigars for purchase



“...book tailored whisky experiences, tastings and dinners”

The Rothes Estate Safari

Roths Glen has been given exclusive access to the stunning 14,000 acre Roths Estate which surrounds Roths Glen.

Access is within five minutes, providing extraordinary views of the rolling Scottish hillside, filled with millions of Scots pine, Sitka Spruce and broadleaf trees, and teeming with wildlife indigenous to the Highlands.

We can offer clay-pigeon shooting, rifle shooting and archery, picnics and lunches, horse riding, bike rides and breath-taking views should you just want to walk and admire the incredible scenery. Each visit is bespoke and costed individually, and requires a minimum of two weeks' notice.



Speyside Experiences

Elgin is seven miles to the north, steeped in history with its 13th century cathedral. It has an impressive range of shops, and the Moray Firth is nearby with sandy beaches, bird watching on the estuaries of the Spey and the Lossie, and sea fishing, dolphin watching and yachting anchorages. The Cairngorms and ski slopes of Aviemore and the Lecht are within easy reach.

The following selection of trips, services, activities and adventures are available either at the castle or nearby by booking in advance with the team:

- Archery
- Canoeing, kayaking and paddle boarding
- Car hire and chauffeur or taxi service
- Clay pigeon and rifle shooting
- Fishing on the River Spey, Findhorn or Arn
- Golf
- Gun dog training performance
- Helicopter sight seeing tours
- Horse riding
- Interactive falconry displays
- Mini Highland Games challenges
- Mountain biking
- Off road quad adventures
- Red deer feeding experience
- Sea fishing
- Shooting / stalking on local estates
- Skiing
- Trout fishing
- Walk with the reindeer
- Walking and wildlife safaris
- White water rafting



Prices

Exclusive Use Managed Stays include:

- Private use of the whole castle.
- Up to 14 en suite king-size bedrooms all with their own large bathrooms with underfloor heating, heated towel rail, shower and bath.
- One accessible bedroom suite with wet room with underfloor heating, heated towel rail and private sitting room.
- Welcome Afternoon Tea or dram on arrival.
- Daily full Scottish breakfast.
- Daily Afternoon Tea.
- Daily housekeeping.
- Use of golf, fishing and gun rooms, kennels and all outdoor amenities.
- All electricity, heating and logs for fires.
- Internationally renowned Rothes Glen Chef.
- Rothes Glen team available to plan itineraries, book activities and assist guests with any enquiries.
- Personal service to buy drinks from the house whisky collection, served by the dram or in 100ml decanters.
- Rothes Glen personal gifts for each suite.

Rothes Glen is available for a minimum of two nights for exclusive use of the whole castle.

Prices for up to four nights are listed below; please ask for prices for more than four nights.

We are also available for single night stays, dinners, day meetings and filming subject to availability.

Dates		2 nights		3 nights		4 nights	
		14 rooms	10 rooms	14 rooms	10 rooms	14 rooms	10 rooms
Winter 2023/24	5 Jan-24 Mar 2024	£12,685	£10,150	£19,030	£15,220	£24,100	£19,280
Summer 2024	24 Mar-1 Nov 2024	£18,250	£15,500	£27,350	£23,250	£34,650	£29,450
Christmas & Hogmanay 2024	20 Dec 2024-4 Jan 2025	N/A	N/A	N/A	N/A	£41,580	£35,340
Winter 2024/25	1 Nov-21 Dec 2024 & 4 Jan-11 Apr 2025	£14,600	£12,400	£21,880	£18,600	£27,720	£23,560
Summer 2025	11 Apr-1 Nov 2025	£19,150	£16,300	£28,750	£24,400	£36,500	£30,900
Christmas & Hogmanay 2025	20 Dec-3 Jan 2026	N/A	N/A	N/A	N/A	£43,800	£37,080
Winter 2025/26	1 Nov-20 Dec 2025 & 3 Jan-29 Mar 2026	£15,320	£13,040	£23,000	£19,520	£29,200	£24,720

The range of menus from the castle chef includes a 2-course lunch from £60 per head, a 3-course dinner at £115 per head or a 5-course dinner at £159 per head. Or for the outdoors, our barbecue is £75 per head, and a light-bite picnic is £37.50 per head. Canapés are £4.50 each. We offer an extensive range of spirits, wines, beers, champagne, and soft drinks, and you can buy whisky from the house whisky collection, served by the dram or in 100ml decanters. We can source a comprehensive range of additional activities – please ask for our Additional Activities & Services List. All prices are inclusive of the prevailing rate of VAT.

We have an accessible suite on the ground floor if required – please ask the Manager for further details. **Please contact Moira | enquiries@rothesglen.com | M: + 44 (0) 7908 893 956**

"We simply adored it. The dram on the roof top made it complete."

Hans, The Netherlands

*"I think it safe to award Roth's Glen 'excellent' on all points,
most particularly the warmth of the team as
they went about their business."*

David and Joanna, UK

*"We had a delightful two days in your impressive Roth's Glen.
Thank you for all your personal involvement and care with
the difficult logistics getting us to all activities.*

Certainly we will spread the word."

Horst, Vietnam

*"We were all absolutely blown away by Roth's Glen and will
definitely be using you for all our accommodation needs."*

Greg, Italy

*"I just wanted to reach out and say a huge thanks to you and your
team for hosting us all. Your staff and team couldn't have been
more accommodating in making us feel comfortable, well fed, at
home and looked after. It was the ideal spot and a place I feel very
fortunate to have had the chance to stay at."*

Josh, UK

*"We very much enjoyed our visit to Roth's Glen. We will be sure to
share our experience with others."*

Chris, USA

*"Your castle and grounds are quite superb, with so many delightfully
surprising new rooms and clever touches.*

*You've turned the place into a delightful and comfortable,
welcoming grand castle."*

Leonard, Scotland

*"You have created somewhere that is comfy, grand, fun, special,
important, beautiful, fine, well made and exceptional. And the team
were heartbreakingly lovely from start to finish."*

Charlie and Alice, UK

*"Thank you for all your and the team's fantastic work last week.
Pass on our compliments to chef – everyone said how fantastic the
food was. Thank you in particular to the 'unflappable' Joanna
who managed all of our random requests with the
utmost professionalism."*

Anyia, UK

*"Roth's Glen must be the warmest, slickest and most comfortable
castle in Speyside. All your attention to detail makes it such a
spoiling and delicious experience."*

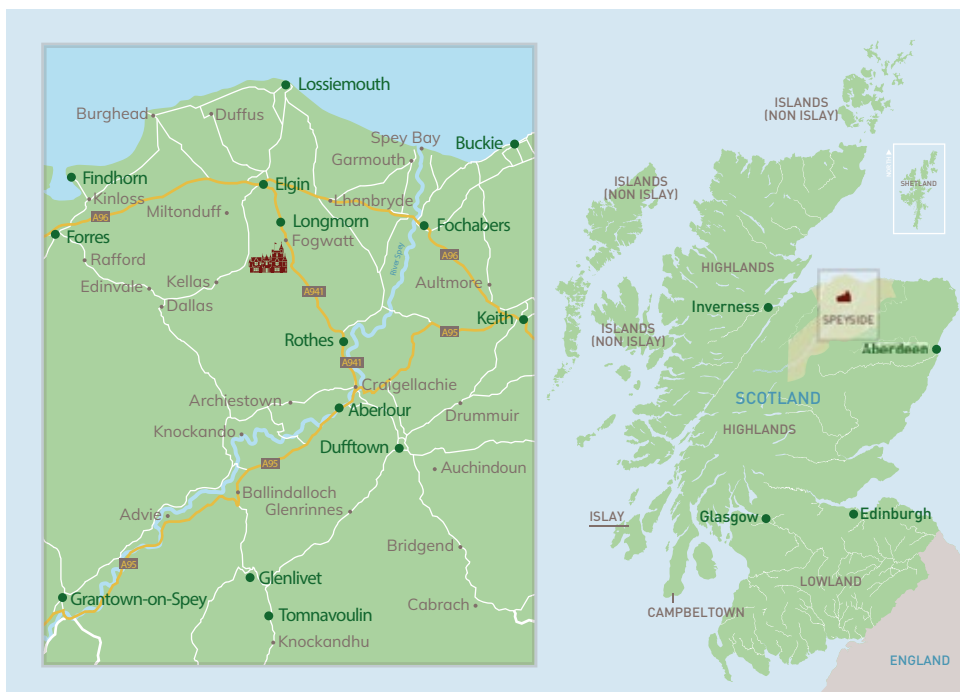
Sacha, UK

*"The castle is a triumph and you have done it up immaculately.
The rooms were extremely comfortable with piping hot water to
every bathroom. And the team were not only very helpful, but
charming too, catering to our every need."*

Laura, UK



ROTH'S GLEN
— SPEYSIDE —



Roths Glen is situated two miles north of Rothes, with Elgin seven miles further north, and the Moray Firth just five miles beyond.

Inverness Airport is 40 miles (one hour) to the west, and Aberdeen airport 58 miles (one hour 15 minutes) to the east. Aviemore train station, with direct connections to Edinburgh and on to London, is 43 miles (one hour).

There is a private helicopter pad and unlimited parking.

DIRECTIONS

From the south, take the A9 north from Perth, then the A95 through Grantown-on-Spey and on to Aberlour and Craigellachie. Continue north through Rothes on the A941 towards Elgin. After two and a half miles Rothes Glen is on your left.

From Inverness, take the A96 to Aberdeen and at Elgin take the A941 south, signposted to Rothes. After seven miles Rothes Glen is on your right.

From Aberdeen, take the A96 to Inverness and at Elgin take the A941 south, signposted to Rothes. After seven miles Rothes Glen is on your right.

“Roths Glen is without a doubt one of the most exceptional private castles of this size that I have encountered. Its superb refurbishment has been achieved without compromising the extraordinary period features and detailing - it is truly a quite outstanding property.”

RUARAIKH OGILVIE, SAVILLS



Contact

Moir Gilchrist | enquiries@rothesglen.com | +44 (0) 7908 893 956
Roths Glen, Roths, Aberlour, AB38 7AQ

 [rothesglen](https://www.instagram.com/rothesglen)  [RothsGlen](https://www.facebook.com/RothsGlen)  [rothes-glen](https://www.linkedin.com/company/rothes-glen)

www.rothesglen.com

